

## Modular wideband couplers/splitters for CSX-2 splitter cabinets

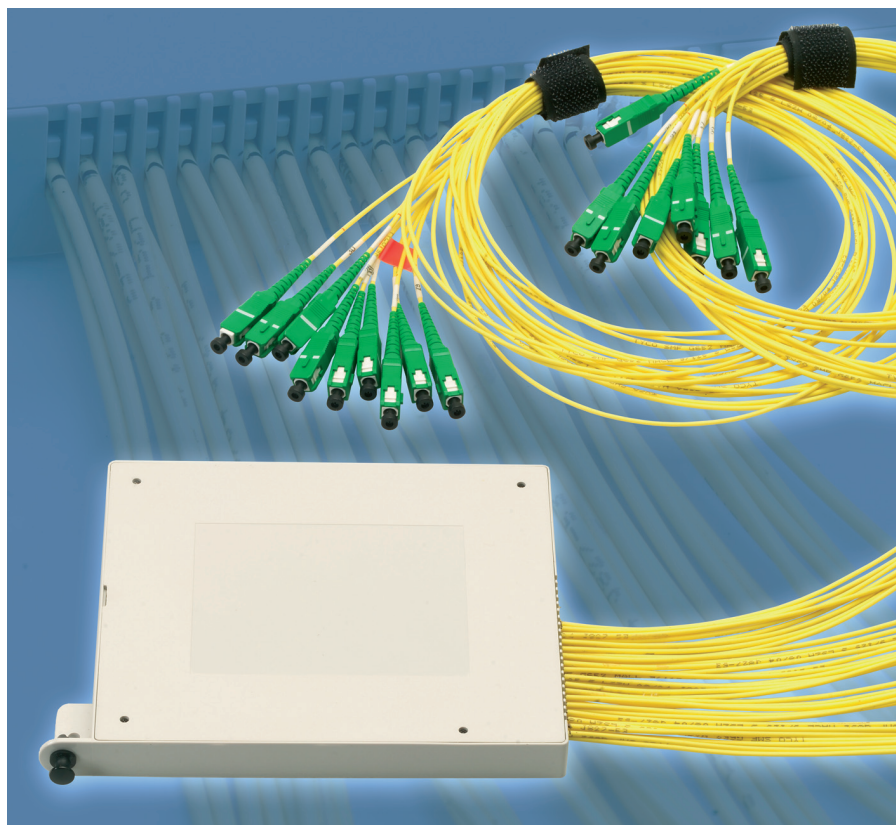
Single mode wideband couplers/splitters are passive optical devices that split and combine light in fiber networks. The OCM modular packaging provides a robust and simple method for integrating these devices into your CSX-2 range for splitter cabinets. A wide selection of split ratios and connector types ensure long lasting compatibility.

### Advantages

- Reliable performance
- Low loss
- Low polarization sensitivity
- Excellent mechanical protection
- Fast and simple installation
- Clean connector storage for unused ports

The splitter components are based on FBT (fused biconic tapered) technology for low split ratio's.

For higher split ratio's, planar waveguide technology is used. These components are standard placed in the "TOAST" protective sealing to ensure a correct operation in outside plant conditions.



## Ordering information

**OCM 5 - S X X X X 00 XX - XXD ASIA**

### Type

**5** Compatible with Tyco range of splitter cabinets

### Grade

**A** Standard  
**P** Planar technology  
**O** Low loss planar technology

### Number of integrated splitters

**Attention:** the **maximum** number of integrated splitters is for each configuration indicated in the table underneath.

Type	5	
Grade	A	P/O
1x2	12	-
2x2	8	-
1x3	6	-
1x4	4	4
2x4	4	4
1x5	3	-
1x6	☎	-
2x6	☎	-
1x8	-	4
2x8	-	4
1x10	☎	-
2x10	☎	-
1x12	☎	-
2x12	☎	-
1x16	-	2
2x16	-	2
1x32	-	1
2x32	-	1

### Cable Type

**ASIA** 1.8 mm, OFNR, LSZH

### Pigtail Length (decimeter)

**01,02, ... 99** Always use 2 digits for cable length \*

### Connector type

<b>S1</b> SC/UPC	<b>L1</b> LC/UPC
<b>S2</b> SC/APC 8°	<b>L2</b> LC/APC
<b>S3</b> SC/APC 9°	<b>F1</b> FC/UPC
<b>SA</b> SC/APC GR326	<b>F2</b> FC/APC
<b>SB</b> SC/UPC GR326	<b>E9</b> E2000
	<b>U1</b> MU/UPC

### Split ratio

**00** symmetrical

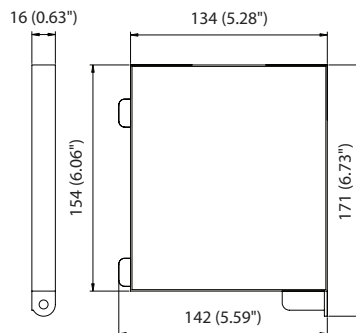
### # of outputs

**2, 3, 4, 5, 6, 8, A (10), C (12), G (16), W (32)**

### # of inputs

**1**  
**2**

\* only the "18D" version includes a pigtail parking rail, to be used inside a CSX-2 cabinet



### Example

OCM5-SP11W00S2-18DASIA: module type 5, 1 splitter 1x32 with SC/APC connectors, symmetrical.

### Performance specifications

Please refer to RUD 5257 (grade A); RUD 5330 (grade P and O) and the TOAST technical guide.

### Product can be installed in:

OCSH range of optical component shelves  
 CSX-2 range of splitter cabinets

**tyco**

Electronics

Tyco Electronics Raychem NV

Diestsesteenweg 692

3010 Kessel-Lo, Belgium

Tel 32-16 351 011 (USA) 1-919-557-8900

Fax 32-16 351 697 (USA) 1-919-557-8498

www.tycoelectronics.com

www.telecomosp.com

*a vital part of your world*

© 2005 Tyco Electronics  
 TC 1020/DS/2 12/05

Tyco is a trademark

The information given herein, including drawings, illustrations and schematics which are intended for illustration purposes only, is believed to be reliable. However, Tyco Electronics makes no warranties as to its accuracy or completeness and disclaims any liability in connection with its use. Tyco Electronics' obligations shall only be as set forth in Tyco Electronics' Standard Terms and Conditions of Sale for this product and in no case will Tyco Electronics be liable for any incidental, indirect or consequential damages arising out of the sale, resale, use or misuse of the product. Users of Tyco Electronics products should make their own evaluation to determine the suitability of each such product for the specific application.